

Датчики уровня Soliswitch FTE20, FTE30, FTE31, FTE130, FTE131

Техническая информация

По вопросам продаж и поддержки обращайтесь:

Алматы (7273)495-231
Ангарск (3955)60-70-56
Архангельск (8182)63-90-72
Астрахань (8512)99-46-04
Барнаул (3852)73-04-60
Белгород (4722)40-23-64
Благовещенск (4162)22-76-07
Брянск (4832)59-03-52
Владивосток (423)249-28-31
Владикавказ (8672)28-90-48
Владимир (4922)49-43-18
Волгоград (844)278-03-48
Вологда (8172)26-41-59
Воронеж (473)204-51-73
Екатеринбург (343)384-55-89

Иваново (4932)77-34-06
Ижевск (3412)26-03-58
Иркутск (395)279-98-46
Казань (843)206-01-48
Калининград (4012)72-03-81
Калуга (4842)92-23-67
Кемерово (3842)65-04-62
Киров (8332)68-02-04
Коломна (4966)23-41-49
Кострома (4942)77-07-48
Краснодар (861)203-40-90
Красноярск (391)204-63-61
Курск (4712)77-13-04
Курган (3522)50-90-47
Липецк (4742)52-20-81

Магнитогорск (3519)55-03-13
Москва (495)268-04-70
Мурманск (8152)59-64-93
Набережные Челны (8552)20-53-41
Нижний Новгород (831)429-08-12
Новокузнецк (3843)20-46-81
Ноябрьск (3496)41-32-12
Новосибирск (383)227-86-73
Омск (3812)21-46-40
Орел (4862)44-53-42
Оренбург (3532)37-68-04
Пенза (8412)22-31-16
Петрозаводск (8142)55-98-37
Псков (8112)59-10-37
Пермь (342)205-81-47

Ростов-на-Дону (863)308-18-15
Рязань (4912)46-61-64
Самара (846)206-03-16
Санкт-Петербург (812)309-46-40
Саратов (845)249-38-78
Севастополь (8692)22-31-93
Саранск (8342)22-96-24
Симферополь (3652)67-13-56
Смоленск (4812)29-41-54
Сочи (862)225-72-31
Ставрополь (8652)20-65-13
Сургут (3462)77-98-35
Сыктывкар (8212)25-95-17
Тамбов (4752)50-40-97
Тверь (4822)63-31-35

Тольятти (8482)63-91-07
Томск (3822)98-41-53
Тула (4872)33-79-87
Тюмень (3452)66-21-18
Ульяновск (8422)24-23-59
Улан-Удэ (3012)59-97-51
Уфа (347)229-48-12
Хабаровск (4212)92-98-04
Чебоксары (8352)28-53-07
Челябинск (351)202-03-61
Череповец (8202)49-02-64
Чита (3022)38-34-83
Якутск (4112)23-90-97
Ярославль (4852)69-52-93

Россия +7(495)268-04-70

Казахстан +7(7172)727-132

Киргизия +996(312)96-26-47

эл.почта: ehr@nt-rt.ru || сайт: <https://endcounters.nt-rt.ru/>

Point level switch Soliswitch FTE20 Rotary paddle switch

Simple mechanical mechanism, extremely robust and cost-effective point level switch for bulk solids



Benefits:

- Safety comes first - Overfill prevention with an automatic rotation monitoring system
- Optical rotation control for a fast and easy check either for installation or for trouble shooting
- Extremely robust polymer housing with the latest dust Ex certification for ATEX, FM and CSA
- Cost savings over the whole life cycle:
 - Fast order process due to E-direct
 - Quick installation
 - Fast trouble shooting concept without the need of demounting
 - Best price performance ratio in the market
- Adjustment to weight of solids without the need for tools
- Housing can be rotated 360° to enable optimal alignment following installation.

Specs at a glance

- **Process temperature** -20 °C ... 80 °C (-4 °F ... 170 °F)
- **Process pressure / max. overpressure limit** 0.5 bar to 1.5 bar (7 psi ... 22 psi)
- **Min. density of medium** ≥ 80 g/l

Field of application: The economical Soliswitch FTE20 is a paddle switch for point level detection in bulk materials. Its robust polymer housing and compact design makes it an ideal sensor for full, empty and demand alarm in applications with bulk solids. The optimized polymers make the

unit outstandingly robust and therefore suitable for use in dust explosive areas according the latest standards.

Features and specifications

Point Level / Solids

Measuring principle

Paddle

Characteristic / Application

universally applicable as a full, empty and demand alarm on silos containing solids

Specialities

Rotation Monitoring System

Fold-away paddle

Supply / Communication

230 VAC 50/60 Hz

115 VAC 50/60 Hz

24 VAC 50/60 Hz

20 bis 28 VDC

Ambient temperature

-20 °C ... 60 °C (-4 °F ... 140 °F)

Process temperature

-20 °C ... 80 °C (-4 °F ... 170 °F)

Process pressure / max. overpressure limit

0.5 bar to 1.5 bar (7 psi ... 22 psi)

Min. density of medium

≥ 80 g/l

Main wetted parts

1.4305

Max. tensile strength

Rope version >1500 N

Point Level / Solids**Process connection**

NPT 1 1/2", PBT
NPT 1 1/4", PBT
G 1 1/2", PBT
NPT 1 1/2", 1.4305
NPT 1 1/4", 1.4305
G 1 1/2", 1.4305

Sensor length

75 mm (3")
100 mm (4")
120 mm (4 3/4")
200 mm (8")
300 mm (12")
Rope length of approx 2000 mm (80"), can be shortened

Communication

Micro switch with changeover contact max. 10 A/250 VAC

Certificates / Approvals

ATEX II1/2D Ex ta/tb IIIC Da/Db
CSA DIP/ II, III/1/E-G
FM DIP/ II, III/1/E-G
EAC Ex ta/tb IIIC Da/Db
IECEX Ex ta/tb IIIC Da/Db
NEPSI Ex tD A20/A21
UK II1/2D Ex ta/tb IIIC Da/Db
INMETRO Ex ta/tb IIIC Da/Db

Options

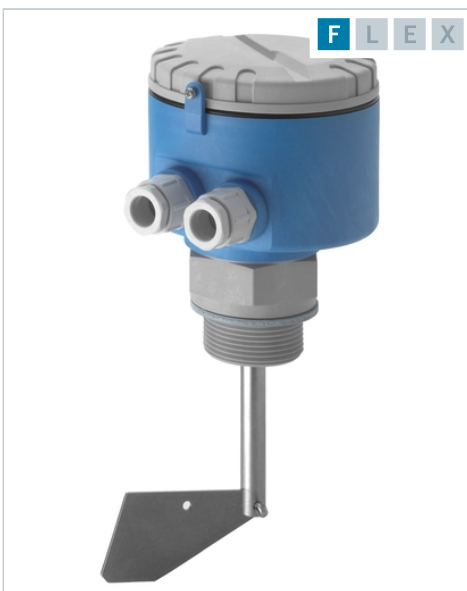
Rotation Monitoring System
Signal Lamp
Fold-away paddle
Weather protection cover

Components

HAW569 Surge arrester

Point level switch Soliswitch FTE30 rotary paddle switch

Simple mechanical mechanism, extremely robust and cost-effective point level switch for bulk solids



Benefits:

- Reliable and economical paddle switch
- Highest safety standard
- Diverse instrument designs for use under different application conditions
- Slip clutch prevents impact on paddle
- Ingress protection to IP65 for optimum safety in the process

Specs at a glance

- **Process temperature** -20 °C ... 80 °C (-4 °F ... 170 °F)
- **Process pressure / max. overpressure limit** 0.5 bar to 1.5 bar (7 psi to 22 psi)
- **Min. density of medium** ≥ 100 g/l

Field of application: The economical Soliswitch FTE30 is a paddle switch for point level detection in bulk materials. Its robust polymer housing and compact design makes it an ideal sensor for full, empty and demand alarm in applications with bulk solids. The optimized materials make the unit outstandingly robust and therefore suitable for use in dust explosive areas.

Features and specifications

Point Level / Solids

Measuring principle

Paddle

Point Level / Solids

Characteristic / Application

universally applicable as a full, empty and demand alarm on silos containing solids

Specialities

Hinged paddle

Supply / Communication

230 VAC 50/60 Hz

115 VAC 50/60 Hz

48 VAC 50/60 Hz

24 VAC 50/60 Hz

20 bis 28 VDC

Ambient temperature

-20 °C ... 60 °C (-4 °F ... 140 °F)

Process temperature

-20 °C ... 80 °C (-4 °F ... 170 °F)

Process pressure / max. overpressure limit

0.5 bar to 1.5 bar (7 psi to 22 psi)

Min. density of medium

≥ 100 g/l

Main wetted parts

Shaft: 1.4305

Paddle: 1.4301

Process connection

G 1 1/2", PBT

G 1 1/2", 1.4305

Reinforced shaft G 1 1/2", 1.4305

Point Level / Solids

Sensor length

100 mm (4")

200 mm (8")

300 mm (12")

400 mm (16")

500 mm (20")

600 mm (24")

Rope length of approx 2000 mm (80"), can be shortened

Communication

Micro switch with changeover contact max. 10 A/250 VAC

Certificates / Approvals

No approvals available

Options

Relay

Application limits

max. grain size 50 mm (2")

Point level switch

Soliswitch FTE31

Rotary paddle switch

Simple mechanical mechanism, extremely robust and cost-effective point level switch for bulk solids



Benefits:

- Reliable and economical paddle switch
- Highest safety standard for dust-explosion-hazardous areas
- Diverse instrument designs for use under different application conditions
- Slip clutch prevents impact on paddle
- Ingress protection to IP 65 / NEMA 4x / Type 4x for optimum safety in the process

Specs at a glance

- **Process temperature** -20 °C ... 80 °C (-4 °F ... 170 °F)
- **Process pressure / max. overpressure limit** 0.5 bar to 1.5 bar (7 psi to 22 psi)
- **Min. density of medium** ≥ 100 g/l

Field of application: The economical Soliswitch FTE31 is a paddle switch for point level detection in bulk materials. Its robust polymer housing and compact design makes it an ideal sensor for full, empty and demand alarm in applications with bulk solids. The optimized materials make the unit outstandingly robust and therefore suitable for use in dust explosive areas.

Features and specifications

Point Level / Solids**Measuring principle**Paddle

Characteristic / Applicationuniversally applicable as a full, empty and demand alarm on silos containing solids

SpecialitiesHinged paddle for retro-fitting

Supply / Communication

230V 50/60 Hz

115V 50/60 Hz

48V 50/60 Hz

24V 50/60 Hz

20 to 28 VDC

Ambient temperature-20 °C ... 60 °C (-4 °F ... 140 °F)

Process temperature-20 °C ... 80 °C (-4 °F ... 170 °F)

Process pressure / max. overpressure limit0.5 bar to 1.5 bar (7 psi to 22 psi)

Min. density of medium ≥ 100 g/l

Main wetted parts

Shaft: 1.4435

Paddle: 1.4435

Process connectionThreaded boss - thread NPT 1 1/4" or NPT 1 1/2"

Point Level / Solids**Sensor length**

Standard:

75 mm (3")

100 mm (4")

200 mm (8")

300 mm (12")

400 mm (16")

500 mm (20")

600 mm (24")

CommunicationRelay

Certificates / Approvals

FM DIP Cl.II,III, Div.1 Gr.EFG

CSA DIP Cl. II,III, Div.1, Gr.EFG

Application limitsmax. grain size 50 mm (2")

FTE130

For limit detection in bulk solids.

- cable inputs 2 x PG 16
- output: microswitch with potential-free change-over contact
- housing from reinforced fibre glass polycarbonate, protection according to DIN 40050, IP 55
- paddle material from 1.4305
- connection piece material from 1.0711 chromated
- shaft material 1.4104

По вопросам продаж и поддержки обращайтесь:

Алматы (7273)495-231
Ангарск (3955)60-70-56
Архангельск (8182)63-90-72
Астрахань (8512)99-46-04
Барнаул (3852)73-04-60
Белгород (4722)40-23-64
Благовещенск (4162)22-76-07
Брянск (4832)59-03-52
Владивосток (423)249-28-31
Владикавказ (8672)28-90-48
Владимир (4922)49-43-18
Волгоград (844)278-03-48
Вологда (8172)26-41-59
Воронеж (473)204-51-73
Екатеринбург (343)384-55-89

Иваново (4932)77-34-06
Ижевск (3412)26-03-58
Иркутск (395)279-98-46
Казань (843)206-01-48
Калининград (4012)72-03-81
Калуга (4842)92-23-67
Кемерово (3842)65-04-62
Киров (8332)68-02-04
Коломна (4966)23-41-49
Кострома (4942)77-07-48
Краснодар (861)203-40-90
Красноярск (391)204-63-61
Курск (4712)77-13-04
Курган (3522)50-90-47
Липецк (4742)52-20-81

Магнитогорск (3519)55-03-13
Москва (495)268-04-70
Мурманск (8152)59-64-93
Набережные Челны (8552)20-53-41
Нижний Новгород (831)429-08-12
Новокузнецк (3843)20-46-81
Ноябрьск (3496)41-32-12
Новосибирск (383)227-86-73
Омск (3812)21-46-40
Орел (4862)44-53-42
Оренбург (3532)37-68-04
Пенза (8412)22-31-16
Петрозаводск (8142)55-98-37
Псков (8112)59-10-37
Пермь (342)205-81-47

Ростов-на-Дону (863)308-18-15
Рязань (4912)46-61-64
Самара (846)206-03-16
Санкт-Петербург (812)309-46-40
Саратов (845)249-38-78
Севастополь (8692)22-31-93
Ставрополь (8652)22-96-24
Симферополь (3652)67-13-56
Смоленск (4812)29-41-54
Сочи (862)225-72-31
Ставрополь (8652)20-65-13
Сургут (3462)77-98-35
Сыктывкар (8212)25-95-17
Тамбов (4752)50-40-97
Тверь (4822)63-31-35

Тольятти (8482)63-91-07
Томск (3822)98-41-53
Тула (4872)33-79-87
Тюмень (3452)66-21-18
Ульяновск (8422)24-23-59
Улан-Удэ (3012)59-97-51
Уфа (347)229-48-12
Хабаровск (4212)92-98-04
Чебоксары (8352)28-53-07
Челябинск (351)202-03-61
Череповец (8202)49-02-64
Чита (3022)38-34-83
Якутск (4112)23-90-97
Ярославль (4852)69-52-93

Россия +7(495)268-04-70

Казахстан +7(7172)727-132

Киргизия +996(312)96-26-47

эл.почта: ehr@nt-rt.ru || сайт: <https://endcounters.nt-rt.ru/>